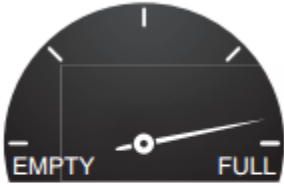


iRAT / tRAT : Percentages

Question 1

These pictures show the dials for four fuel tanks.

Which dial shows that the tank is about 75% full?



A



B



C



D

Question 2

What percentage of one hour is fifteen minutes?

15%

20%

25%

30%

A

B

C

D

Question 3

What is \$10 as a percentage of \$40?

4%

10%

25%

40%

A

B

C

D

Question 4

You scored 15 out of 20 in a test. What was your percentage?

75%

80%

15%

30%

A

B

C

D

Question 5

Kyle won 17 games out of a possible 20.

What percentage of the games did he lose?

3%

15%

17%

20%

A

B

C

D

Question 6

What is 60% of 60?

A 10

B 1

C 30

D 36

Question 7

A carton of light bulbs was dropped while being delivered.

When it was opened, it was found that 45 bulbs were broken and only 27 still worked.

What percentage of the contents of the carton was broken in the accident?

37½%

45%

60%

62½%

A

B

C

D

Question 8

A school has a total of 1500 students in Years 1 to 12.

Three-fifths of the students are in the primary section in Years 1 to 7.

8% of the primary school students are left-handed.

The number of left-handed students in the primary section is

A 56

B 72

C 90

D 120

Question 9

Sally has 60 DVDs.

This table shows the percentage of each type of DVD.

Type of DVD	Percentage
Drama	45%
Sport	25%
Comedy	20%
Cartoons	10%

How many Comedy DVDs does Sally have?

3

12

15

20

A

B

C

D

Question 10

Which of these percentages is closest in value to $\frac{7}{9}$?

76%

77%

78%

79%

A

B

C

D

Question 11

A copier prints 1200 leaflets.

One-third of the leaflets are on yellow paper and the rest are on blue paper.

There are smudges on 5% of the blue leaflets.

How many blue leaflets have smudges?

40

60

400

800

A

B

C

D

Question 12

A ticket costs \$75.

A fee of 10% is added to the price.

Which calculation will give the new price?

$75 + 10$

$75 + 0.1$

75×0.1

75×1.1

A

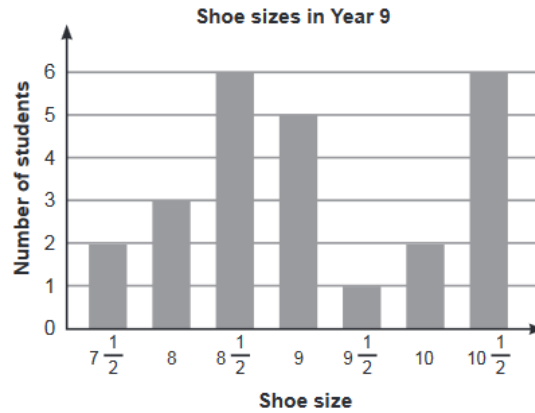
B

C

D

Question 13

The following graph displays the number of students with different shoe sizes:



According to the column graph, what is the percentage of students who have a shoe size of 10 or more?

- A 24% B 8% C 56% D 32%

Question 14

I counted the jelly beans in a small packet and found 6 white, 7 red, 4 yellow and 3 black jelly beans.

What is the percentage of the jelly beans that are not black?

- A 15% B 20% C 30% D 85%

Question 15

78% of a backyard is covered in lawn. The area of the lawn is 39 m^2 . How big is the entire backyard?

- A 177.27 m^2 B 30.42 m^2 C 11 m^2 D 50 m^2